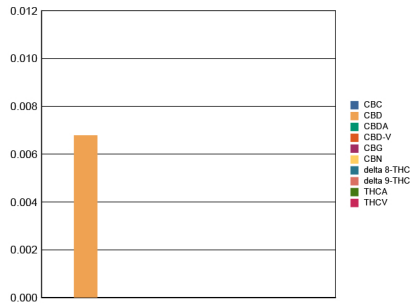


Sample Information			
Sample Identification	Kangaroo CBD - Gummy 500mg - Sugar Free		
Laboratory Number	1909028-09		
Batch Number	1		
Matrix	Medible		
Cannabinoid (HPLC)			
Compound	mg/g	mg/contai	%
THCA	ND	ND	ND
delta 9-THC	0.044	8.86	0.004
delta 8-THC	0.049	9.81	0.005
THCV	ND	ND	ND
CBDA	ND	ND	ND
CBD	0.068	13.6	0.007
CBD-V	ND	ND	ND
CBN	ND	ND	ND
CBG	ND	ND	ND
CBC	ND	ND	ND
Cannabinoids Total			
Max Active THC	0.00	0.00	0.00
Max Active CBD	0.07	0.01	0.01
T.Active Cannabinoids	0.16	500.20	0.02
Total Cannabinoids	0.16	500.20	0.02
Mx Active Ratios			
0.73 : 1 CBD to THC			
1.38 : 1 THC to CBD			

RS (GCMS-MS)	ppm	RL
Compound		
Acetone	NT	NT
Acetonitrile	NT	NT
Benzene	NT	NT
n-Butane	NT	NT
Carbon Tetrachloride	NT	NT
Chloroform	NT	NT
1,2-Dichloroethane	NT	NT
Ethanol	NT	NT
Ethyl acetate	NT	NT
Ethylene oxide	NT	NT
n-Heptane	NT	NT
n-Hexane	NT	NT
iso-Butane	NT	NT
iso-Pentane	NT	NT
Methylene Chloride	NT	NT
n-Pentane	NT	NT
Propane	NT	NT
2-Propanol (IPA)	NT	NT
Tetrahydrofuran	NT	NT
Toluene	NT	NT
Trichloroethane	NT	NT
o-xylene	NT	NT
Xylenes (m,p)	NT	NT

Terpenes (HPLC)	mg/g	%
Compound		
alpha-Bisabolol	NT	NT
(-)-Borneol and (+)-Borneol	NT	NT
Camphene	NT	NT
Camphor	NT	NT
beta-Caryophyllene	NT	NT
trans-Caryophyllene	NT	NT
Caryophyllene Oxide	NT	NT
alpha-Cedrene	NT	NT
Cedrol	NT	NT
Endo-fenchyl Alcohol	NT	NT
Eucalyptol	NT	NT
Fenchone	NT	NT
Geraniol	NT	NT
Geranyl acetate	NT	NT
Guaial	NT	NT
Hexahydrothymol	NT	NT
alpha-Humulene	NT	NT
Isoborneol	NT	NT
Isopulegol	NT	NT
Limonene	NT	NT
Linalool	NT	NT
p-Mentha-1,5-diene	NT	NT
beta-Myrcene	NT	NT
trans-Nerolidol	NT	NT
Ocimene Isomer 1	NT	NT
alpha-Pinene	NT	NT
beta-Pinene	NT	NT
Pulegone	NT	NT
Sabinene	NT	NT
Sabinene Hydrate	NT	NT
gamma-Terpinene	NT	NT
alpha-Terpinene	NT	NT
alpha-Terpineol	NT	NT
3-Carene	NT	NT
Ocimene Isomer 2	NT	NT
gamma-Terpineol	NT	NT
Terpinolene	NT	NT
Valencene	NT	NT

Cannabinoid (%)



RL = Reporting Limit
 NA = Not Applicable
 NT = Not Tested
 ND = Non Detected

Metals	ppm	RL
Compound		
Arsenic	NT	NT
Cadmium	NT	NT
Mercury	NT	NT
Lead	NT	NT
Percent Moisture		
NT %		
Water Activity		
NT		