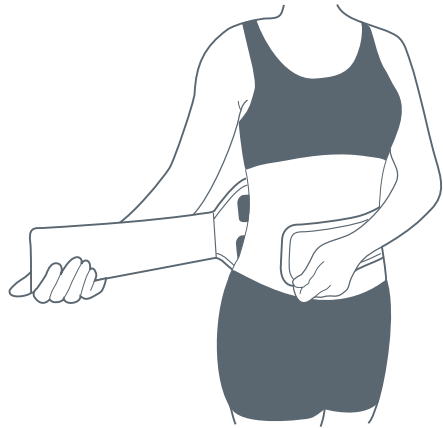




PurePulse Pro

THERAPY BELT



QUICK START GUIDE

Model: PEPROBELT

PLEASE READ THOROUGHLY BEFORE USING THIS PRODUCT

WARNINGS

- Read and follow all warnings and cautions of your TENS Device before use.
- PurePulse Pro Belt is intended for use on the lower back only.
- Therapy with the PurePulse Pro Belt is a proven and natural way of pain management; however, it does not replace medical diagnosis or treatment. If you have any current medical conditions or concerns, consult your physician.
- Keep out of the reach of children.
- Do not use this product in or around water.
- Put on the belt and connect the connectors before starting your TENS Device.
- Use the belt only on normal, healthy, clean and dry skin. Do not use the belt on open wounds or rashes, or over swollen, red, infected or inflamed skin.
- Do not wash the belt in water. Do not use in the washing machine or dryer for any reason.
- Do not dry clean your belt. Do not dry it using anything hot like a dryer or radiator as it contains plastic parts
- The cables are built into the belt. Do not pull on the cables. Do not pull on the cables but on the connectors attached to the ends of the cables in order to detach from your TENS device.
- Always detach the TENS device from the belt after use.
- If the belt is damp after use, let it dry naturally before using again.

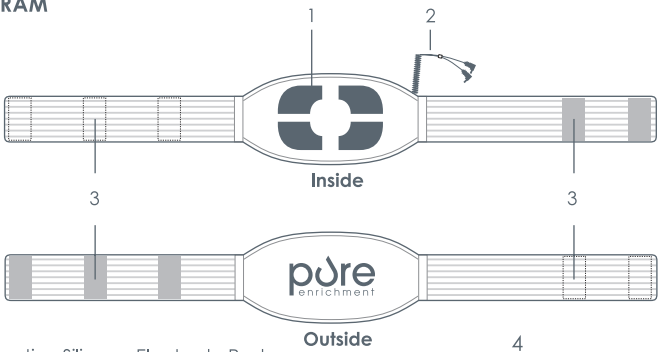


1

INTRODUCTION

Thank you for purchasing the PurePulse Pro Therapy Belt! This high-tech belt is built for use with the PurePulse Pro Electronic Pulse Massager. PurePulse Pro Belt is built for lower back pain and has built in electrodes, removing the need to purchase disposable replacement pads.

PARTS DIAGRAM

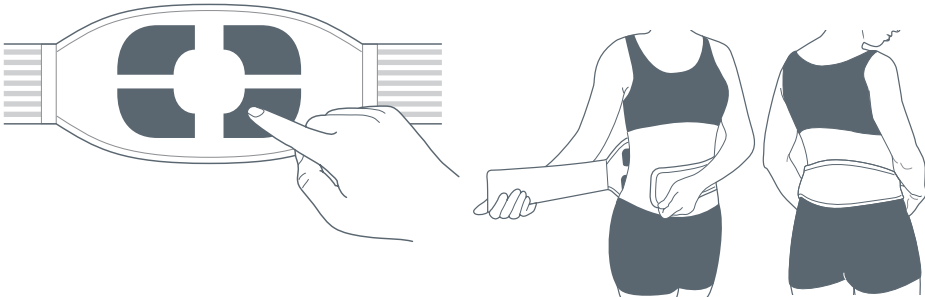


- 1) Conductive Silicone Electrode Pads
- 2) Integrated Connection Cables
- 3) Adjustable Velcro Closure
- 4) 12" Belt Extension for Larger Waist Sizes

2

HOW TO USE

- 1) Before putting on the belt, remove any residue of creams or ointments and make sure that your skin is clean and oil free. Do not place the belt on injured or inflamed areas of the skin.
- 2) Before use, lightly dampen the integrated silicone electrodes with water.

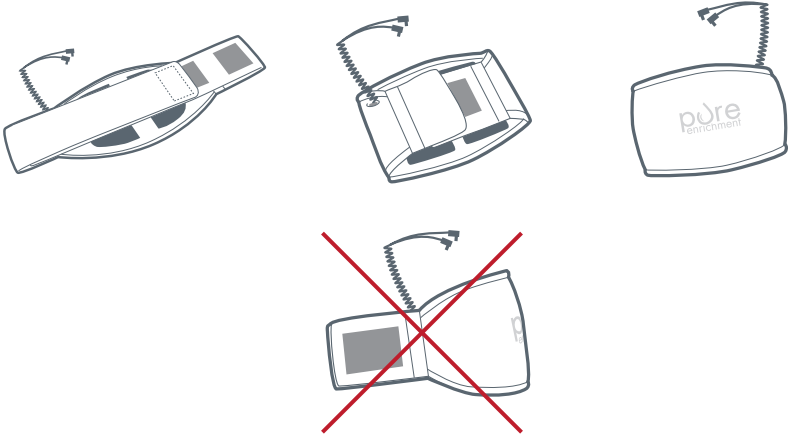


- 3) Position the electrodes on the bare area of your lower back that needs treatment.
- 4) When the belt has been adjusted into the correct position, wrap around your waist and fasten using the Velcro pads.
- 5) Plug your TENS device into the integrated connection cables. Turn on your TENS device and use as directed

3

CARE AND MAINTENANCE

- The PurePulse Pro Belt may be cleaned using a lightly dampened sponge. Lay the belt flat or hang it up to dry naturally.
- When storing your belt, DO NOT fold where the electrode pads are. Folding through the electrode pads will reduce the lifespan of your product and void your warranty.



4

WARRANTY AND PRODUCT REGISTRATION

Pure Enrichment offers an industry-leading 1 Year Warranty on PurePulse Pro Belt. To ensure your full warranty and receive full streamlined support, don't forget to register your product at pureenrichment.com/productregistration



Pure Enrichment ©
Santa Ana, CA 92705
www.pureenrichment.com

5