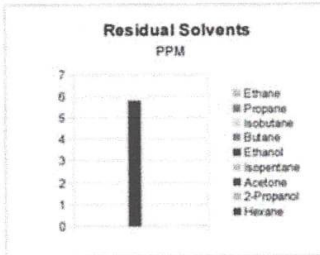


DESERT VALLEY TESTING
 2512 E Magnolia Street
 Phoenix, Arizona 85034
 480-788-6644
 www.desertvalleytesting.com

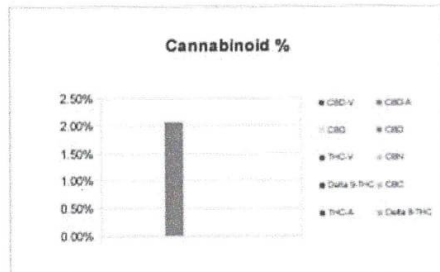
| Sample Information | | |
|---------------------------|------------------|-------|
| Sample Identification | JGO 50mg Gummies | |
| Laboratory Number | 2018001853 | |
| Batch Number | N/A | |
| Matrix | Medible | |
| Analyzed Date | 02/08/18 | |
| Extraction Date | 02/08/18 | |
| Cannabinoid (HPLC) | % | mg/g |
| Compound | | |
| CBD-V | 0.00% | 0.00 |
| CBD-A | 0.00% | 0.00 |
| CBG | 0.00% | 0.00 |
| CBD | 2.05% | 50.53 |
| THC-V | 0.00% | 0.00 |
| CBN | 0.00% | 0.00 |
| Delta 9-THC | 0.00% | 0.00 |
| CBC | 0.00% | 0.00 |
| THC-A | 0.00% | 0.00 |
| Delta 8-THC | 0.00% | 0.00 |
| Cannabinoids Total | | |
| Max Active THC | 0.00% | 0.00 |
| Max Active CBD | 2.05% | 50.53 |
| T. Active Cannabinoids | 2.05% | 50.53 |
| Total Cannabinoids | 2.05% | 50.53 |
| Max Active Ratios | | |
| N/A:1 CBD to THC | | |
| 0.0:1 THC to CBD | | |

| ACCL | | |
|---|-------|------|
| ASSOCIATION OF COMMERCIAL CANNABIS LABORATORIES | | |
| RS (GCMS-HS) | PPM | RL |
| Compound | | |
| Ethane | <20.0 | 20.0 |
| Propane | <5.0 | 5.0 |
| Isobutane | <5.0 | 5.0 |
| Butane | <5.0 | 5.0 |
| Ethanol | 5.77 | 5.0 |
| Isopentane | <5.0 | 5.0 |
| Acetone | <50.0 | 50.0 |
| 2-Propanol | <5.0 | 5.0 |
| Hexane | <5.0 | 5.0 |
| Heptane | <5.0 | 5.0 |

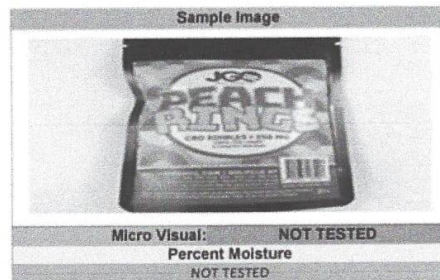
| Terpene (GC-MS) | % | mg/g |
|--------------------------------|-------|------|
| Compound | | |
| alpha-Pinene | 0.00% | 0.00 |
| Camphene | 0.00% | 0.00 |
| Sabinene | 0.00% | 0.00 |
| beta-Myrcene | 0.00% | 0.00 |
| Beta-Pinene | 0.00% | 0.00 |
| p-mentha-1-5-diene | 0.00% | 0.00 |
| (1S)-(+)-3-Carene | 0.00% | 0.00 |
| Alpha-Terpinene | 0.00% | 0.00 |
| Ocimene Isomer 1 | 0.00% | 0.00 |
| (R)-(+)-Limonene | 0.00% | 0.00 |
| Ocimene Isomer2 | 0.00% | 0.00 |
| Eucalyptol (1,8-Cineole) | 0.00% | 0.00 |
| gamma-Terpinene | 0.00% | 0.00 |
| Sabinene Hydrate | 0.00% | 0.00 |
| Terpinolene | 0.00% | 0.00 |
| Linalool | 0.00% | 0.00 |
| (+)-Fenchone and L(-)-Fenchone | 0.00% | 0.00 |
| 1R)-Endo-(+)-Fenchyl | 0.00% | 0.00 |
| (-)-Isopulegol | 0.00% | 0.00 |
| Camphor | 0.00% | 0.00 |
| Isoborneol | 0.00% | 0.00 |
| Hexahydrothymol | 0.00% | 0.00 |
| (+)-Borneol and (-) Borneol | 0.00% | 0.00 |
| alpha-Terpineol | 0.00% | 0.00 |
| gamma-Terpineol | 0.00% | 0.00 |
| Nerol | 0.00% | 0.00 |
| Geraniol | 0.00% | 0.00 |
| (+) -Pulegone | 0.00% | 0.00 |
| Geranyl Acetate | 0.00% | 0.00 |
| alpha-Cedrene | 0.00% | 0.00 |
| trans-Caryophyllene | 0.00% | 0.00 |
| alpha-Humulene | 0.00% | 0.00 |
| Valencene | 0.00% | 0.00 |
| cis-Nerolidol | 0.00% | 0.00 |
| trans-Nerolidol | 0.00% | 0.00 |
| Guaiol | 0.00% | 0.00 |
| (-)-Caryophyllene Oxide | 0.00% | 0.00 |
| (+)-Cedrol | 0.00% | 0.00 |
| (-)-alpha-Bisabolol | 0.00% | 0.00 |
| Total Terpenes | 0.00% | 0.00 |



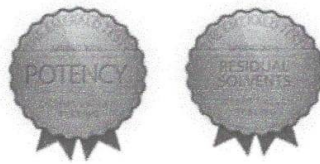
| | |
|--|-------|
| g/medible | 8.81 |
| mg THC/medible | 0 |
| mg CBD/medible | 50.88 |
| (mg) total cannabinoids/medible | 50.88 |



| Metals | PPM | RL |
|----------|---------|-------|
| Compound | | |
| Mercury | Pending | 0.001 |
| Lead | Pending | 0.010 |
| Arsenic | Pending | 0.010 |
| Cadmium | Pending | 0.010 |



RL=Reporting Limit
 NA=Not Applicable
 NT=Not Tested



Chemist: JW
 Report Expires: 03/08/19

Reported on 02/10/2018
 Copyright © 2015 Desert Valley Testing

Confidential